

# PHILLIP JEFFRIES

NATURAL | TEXTURED | SPECIALTY | WALLCOVERINGS

## HANGING INSTRUCTIONS

### SILK STRATA WALLCOVERINGS

**STOP: DO NOT CUT OR INSTALL UNTIL YOU HAVE READ THESE INSTRUCTIONS!**

Thank you for choosing this fine handcrafted wallcovering. For the best results, we believe that a professional wallcovering installer should hang these wallcoverings.

#### **DESCRIPTION:**

Inspired by the luxurious layers of mountainous horizons, a natural silk scrim atop a printed wallcovering ground creates an ethereal shadow print. Available in a range of soft neutrals that are treated with anti-fray and stain repellent finishes to ensure ease of installation and exceptional durability.

#### **PREPARATION:**

Before you cut and hang, please be sure you have:

1. The correct wallcovering and the correct amount of wallcovering to finish the job.
2. Inspect the wallcovering carefully to ensure it is free of defects:

If no defect is evident before installation, the material should be inspected after three (3) strips are installed. If any defect is evident at this time (or at any point in the installation) no additional material should be hung until Phillip Jeffries is notified. **NO CLAIMS WILL BE ALLOWED FOR MORE THAN (3) STRIPS ON THE WALL.** All claims must be made within 30 days of the invoice date. No labor claims will be allowed at any time.

**BUILDING & MATERIAL CONDITIONS:** The building must be weather-tight with HVAC settings (including pressure, temperature and relative humidity) the same as those of an occupied building for three days prior to, throughout installation and three days after installation. The walls must be structurally sound including elimination of sources of moisture accumulation into the wall or wall cavity. The wallcovering must be in a clean and dry condition and must be stored at normal occupied building temperature and humidity for at least three days prior to installation. All adhesives and primers must be new, good quality, commercial grade materials, which have not been contaminated.

IF YOU HAVE ANY QUESTIONS, PLEASE STOP AND CONTACT  
**PHILLIP JEFFRIES** BEFORE PROCEEDING.

#### **WALL PREPARATION:**

1. The walls to be covered must be properly prepared to insure that the wallpaper will adhere to the wall surface. Even the strongest adhesive can only work when the wall surface is clean and properly prepared.
2. Phillip Jeffries recommends that installers use a hard, acrylic, pigmented, wall-protecting primer that is SPECIFICALLY made for WALLCOVERING INSTALLATION and WALL PROTECTION.  
**DO NOT USE R-35.**
3. Allow the primer to dry thoroughly before hanging.

**SEE REVERSE SIDE**

# PHILLIP JEFFRIES

NATURAL | TEXTURED | SPECIALTY | WALLCOVERINGS

## HANGING INSTRUCTIONS

### SILK STRATA WALLCOVERINGS

**STOP: DO NOT CUT OR INSTALL UNTIL YOU HAVE READ THESE INSTRUCTIONS!**

#### INSTALLATION

##### ADHESIVE

1. We recommend a clear, pre-mixed adhesive.
2. Apply the paste to the back of the paper, which will become flexible and easy to hang. Allow the paste to become tacky prior to hanging (exact time will vary based on temperature, humidity, etc.)
3. Do not add excessive water to the paste as it may cause the backing paper to pull away from the front.

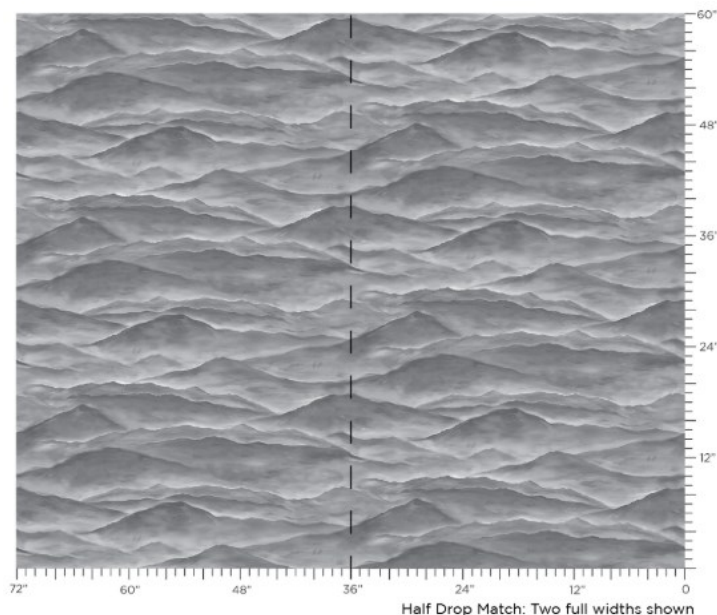
##### TRIMMING

1. The edges are untrimmed and will require cutting a precision edge on your work table.
2. Trim to 36" (91.4 cm).
3. Trim edges with a VERY sharp razor blade. Change your blades often.

##### MATCHING

1. Once trimmed, seams should be butted together to create a half drop match. **DO NOT REVERSE STRIPS.**
2. Once two strips are matched, the overall repeat is 39.38" V x 72" H (**See Diagram A**)
3. Ensure a match at eye level to create the most consistent finished look.

**Diagram A**  
**Half Drop Repeat**



# PHILLIP JEFFRIES

NATURAL | TEXTURED | SPECIALTY | WALLCOVERINGS

## HANGING INSTRUCTIONS

### SILK STRATA WALLCOVERINGS

**STOP: DO NOT CUT OR INSTALL UNTIL YOU HAVE READ THESE INSTRUCTIONS!**

#### INSTALLATION

##### TIPS

1. Use a soft brush or cloth when hanging, so that you do not damage the face of the wallcovering.
2. DO NOT allow paste or excessive water to stain the front of the wallcovering.
3. Prior to hanging, determine which strips will provide the most even shading.
4. The silk wallcoverings have a natural finish and may show some shade variation from strip to strip. As the wallcovering oxidize, these variations should soften over time.
5. Paste, trim and hang one strip at a time.
6. Consider using a light painters tape to cover the edges of previously installed strips, so that the paste coming out from the seams will not settle on the installed strips.
7. Gently smooth the wallcovering using a plastic smoother. Do not use a seam roller.

# PHILLIP JEFFRIES

NATURAL | TEXTURED | SPECIALTY | WALLCOVERINGS

## HANGING INSTRUCTIONS

### SILK STRATA WALLCOVERINGS

**STOP: DO NOT CUT OR INSTALL UNTIL YOU HAVE READ THESE INSTRUCTIONS!**

#### FINAL INSTALLATION

